



Stoneacre
Properties



Jean Avenue, Leeds, LS15 0HU

£260,000

Offered to the market is this beautiful two bedroom semi detached bungalow located on Jean Avenue, Leeds. The property is situated in a popular location close to all local amenities including: shops, schools and transport links. The property briefly comprises of: entrance hall way, kitchen, lounge, two bedrooms and family bathroom. Externally the property benefits from a low maintenance rear garden. Driveway to the front elevation providing off street parking. This property is not one to be missed to arrange your viewing please contact the office today.

ENTRANCE HALLWAY

Door to the side elevation. Central heating radiator.

KITCHEN



Range of wall and base units. Space for oven. Space for under counter fridge. Plumbing for washing machine. Sink and drainer. Double glazed window to the front elevation. Central heating radiator.

LOUNGE



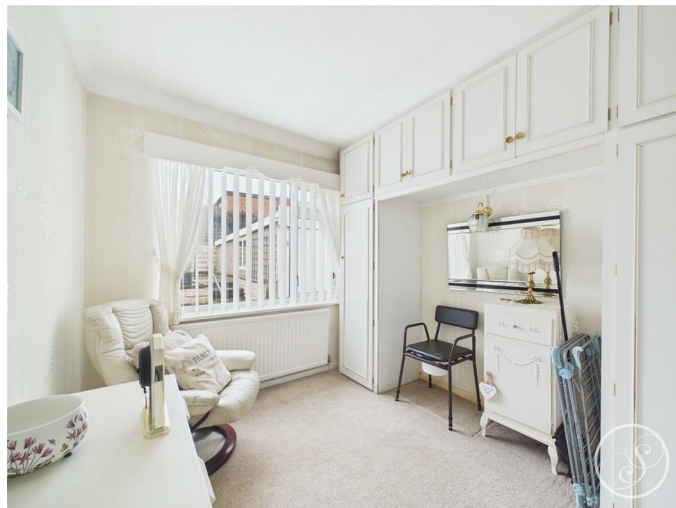
Double glazed window to the front elevation. Fire with surround. Central heating radiator.

BEDROOM ONE



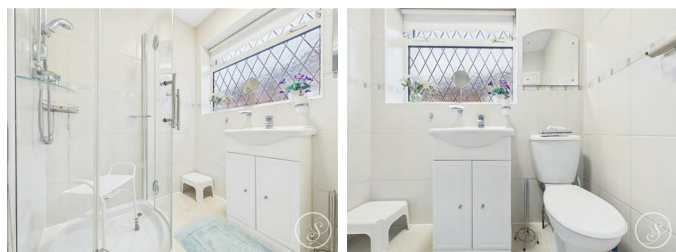
Double glazed window to the rear elevation. Central heating radiator. Fitted wardrobes.

BEDROOM TWO



Double glazed window to the rear elevation. Central heating radiator. Fitted wardrobes.

BATHROOM



Double glazed frosted window to the side elevation. Low flush w.c. Wash hand basin with storage below. Shower cubicle. Heated towel rail.

EXTERNAL



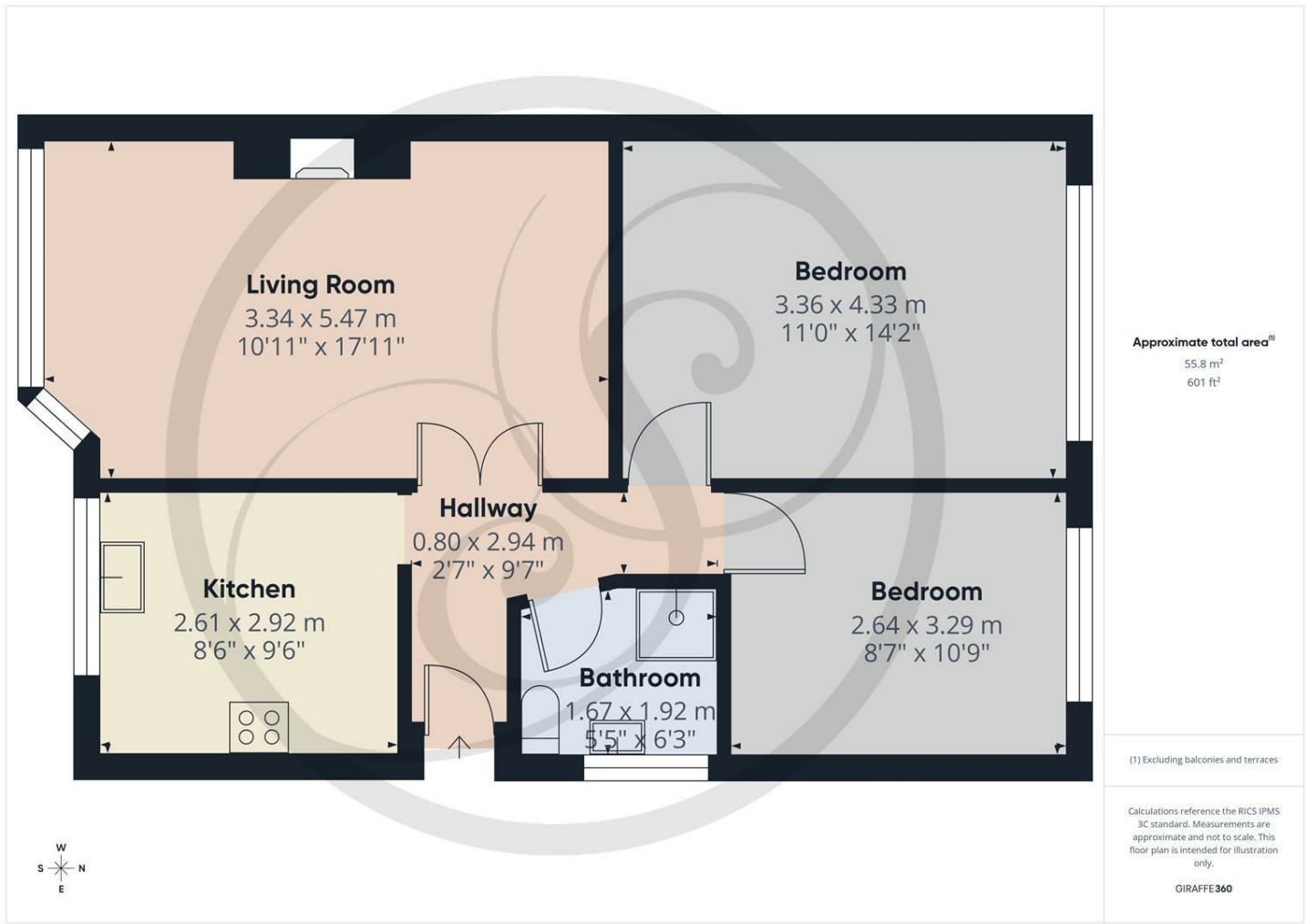
Driveway to the front and side elevation providing off street parking.

GARAGE

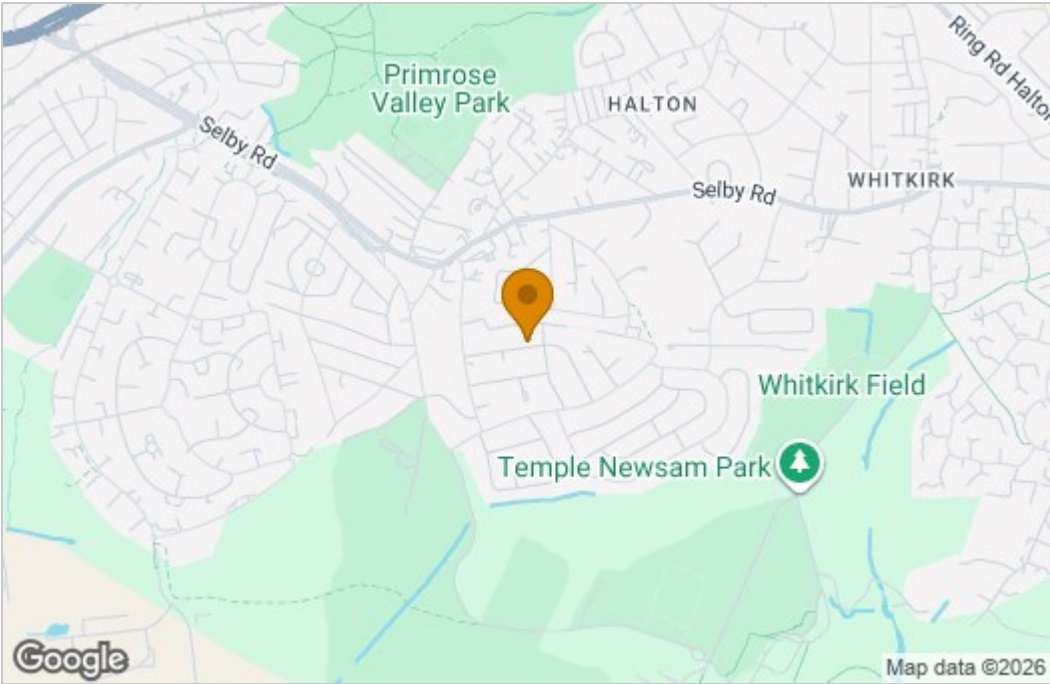


Power and light.

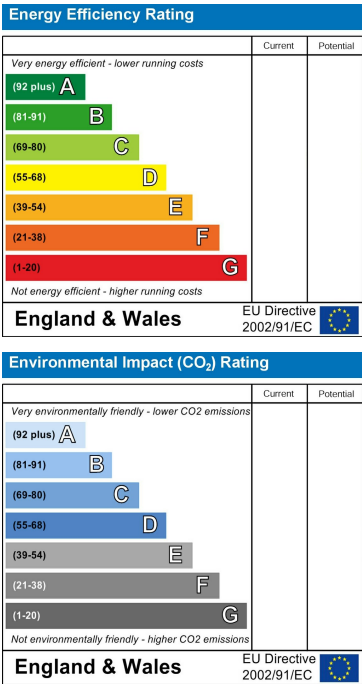
Floor Plan



Area Map



Energy Efficiency Graph



These particulars, whilst believed to be accurate are set out as a general outline only for guidance and do not constitute any part of an offer or contract. Intending purchasers should not rely on them as statements of representation of fact, but must satisfy themselves by inspection or otherwise as to their accuracy. No person in this firm's employment has the authority to make or give any representation or warranty in respect of the property.

